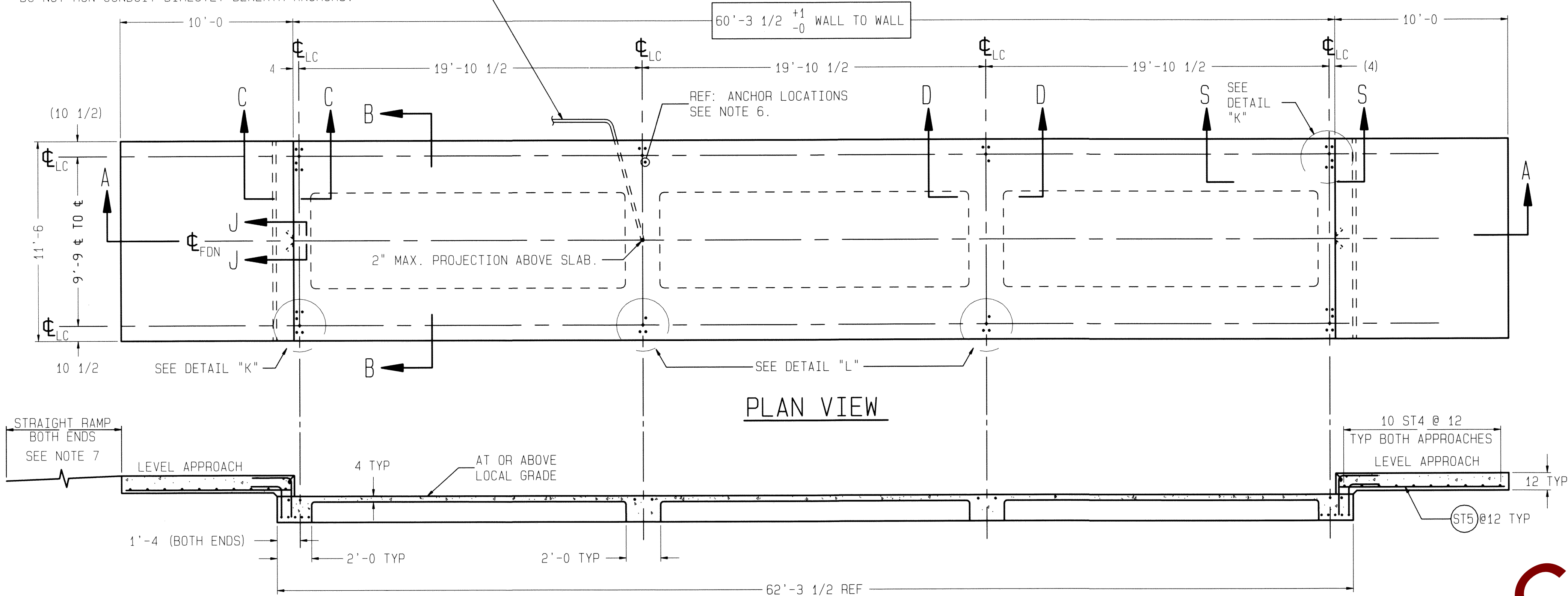
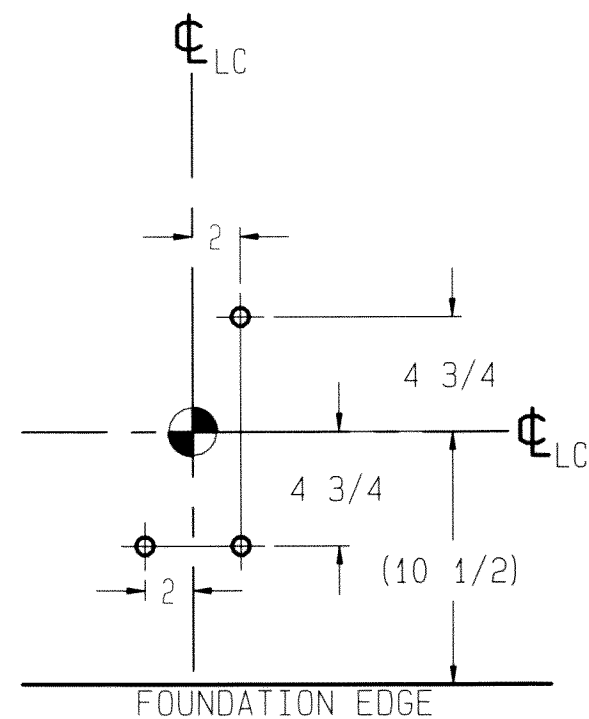


1 1/2" DIA CONDUIT <STEEL PREFERRED> FOR INSTRUMENT CABLE.
DO NOT RUN CONDUIT DIRECTLY BENEATH ANCHORS.

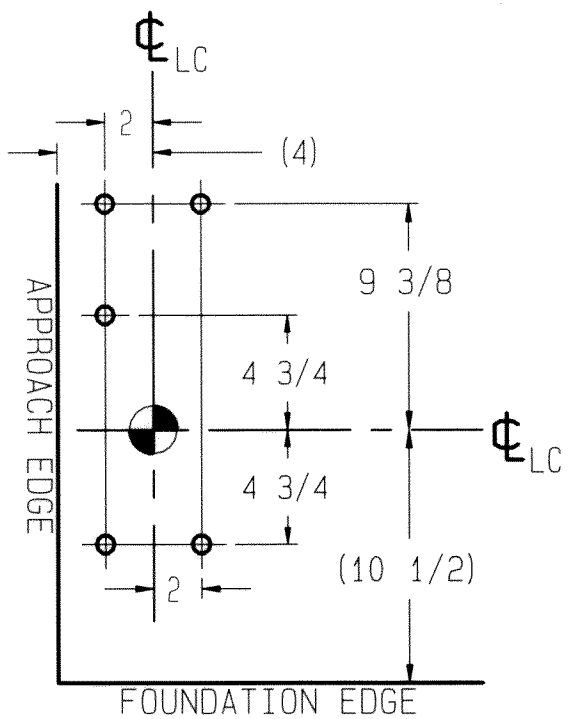


SECTION A-A



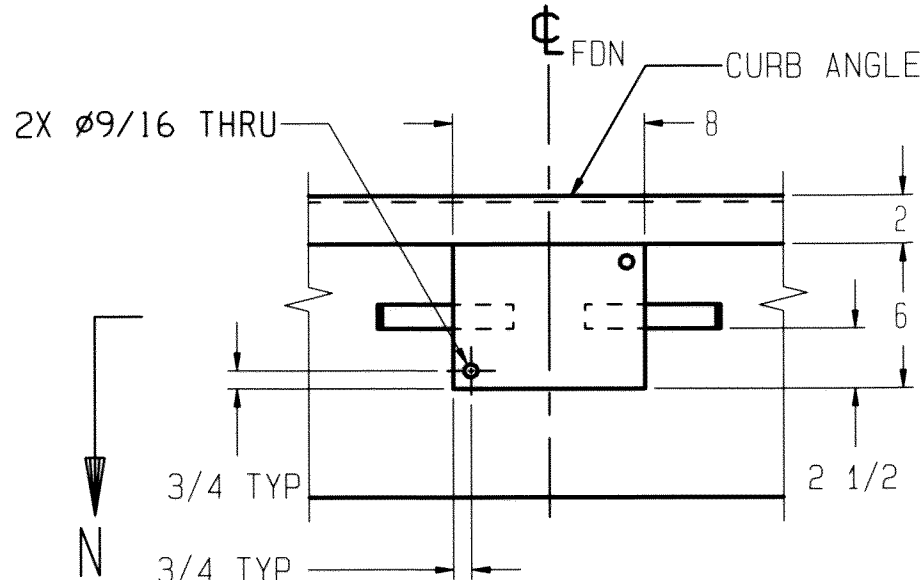
DETAIL "L"

ANCHOR LOCATIONS
(OTHER SIDE IS OPPOSITE)



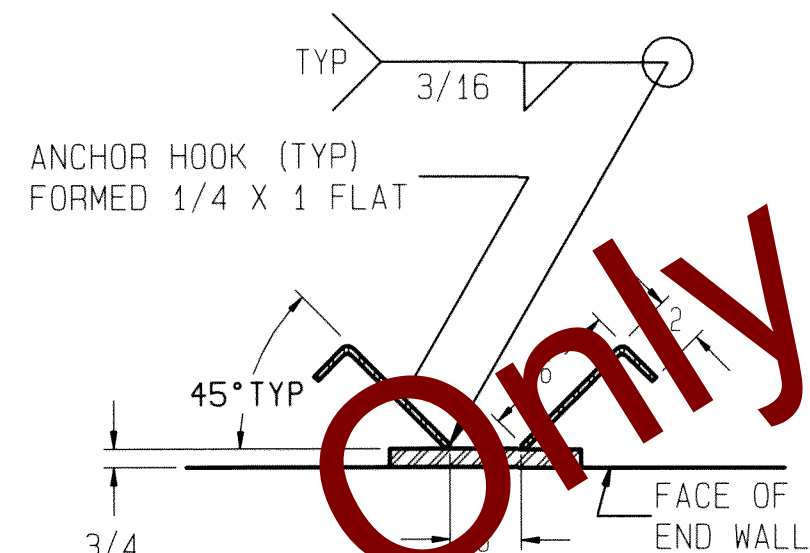
DETAIL "K"

ANCHOR LOCATIONS
(OTHER SIDE IS OPPOSITE)



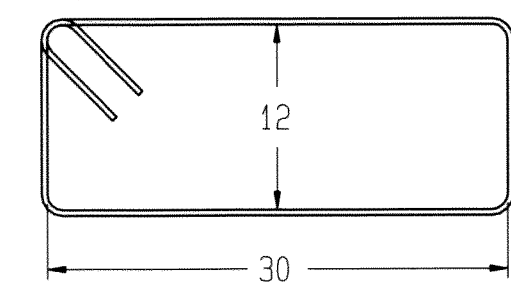
VIEW J-J

SCALE: 1/8
BUMPER PLATE ASSY'S (ONE EACH END)
MATERIAL: H.R. STEEL (BY OTHERS)



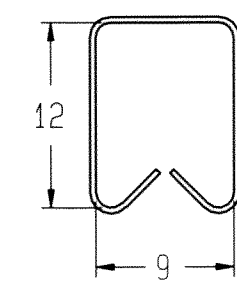
SECTION N-N

SCALE: 1/8



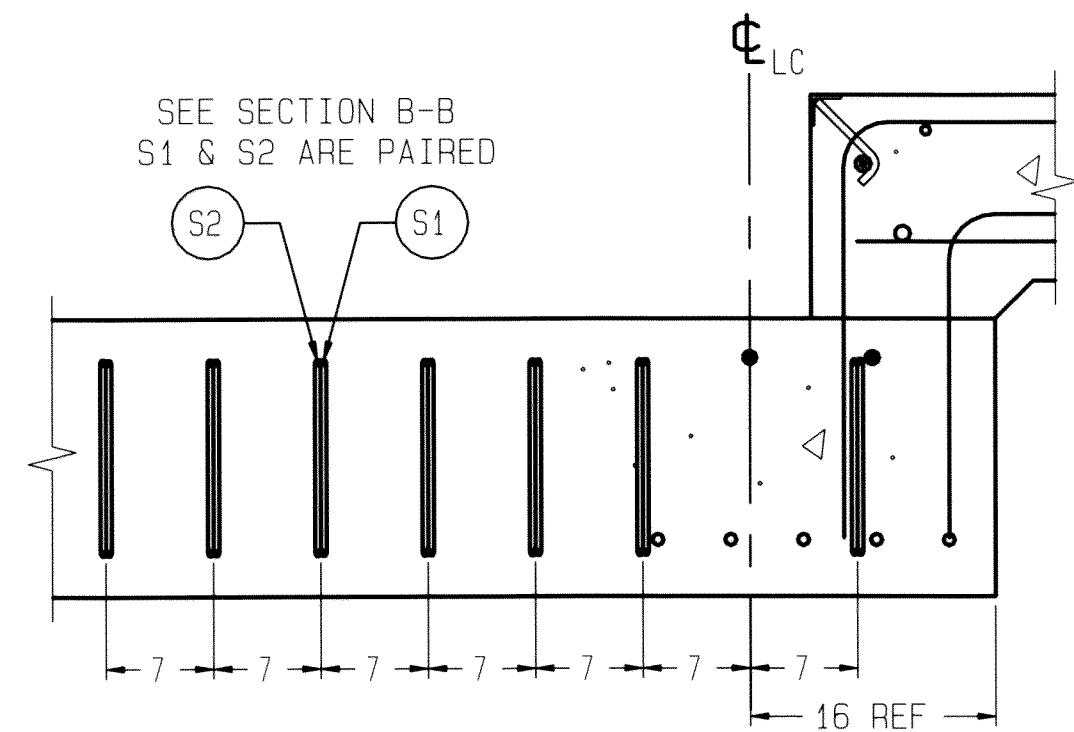
DETAIL ITEM S1

AT ANCHOR LOCATIONS
(FORM TO INSIDE DIMENSIONS)



DETAIL ITEM S2

AT ANCHOR LOCATIONS
(FORM TO INSIDE DIMENSIONS)



SECTION S-S

BOTH ENDS OF BOTH MAIN BEAMS
(4 PLACES TOTAL)

MATERIAL SUMMARY

CONCRETE (CU. YDS.)	35.5
REINFORCING STEEL (LBS)	4853
WWF: 6x6_W1.4xW1.4 (SQ. FT.)	725

NOTES:

- 1) USE MINIMUM 3000 PSI STRENGTH CONCRETE AT 28 DAYS WITH 5-7% AIR ENTRAINMENT.
- 2) USE MINIMUM 60KSI YIELD DEFORMED REINFORCING STEEL. REBAR MINIMUM DEPTH OF COVER SHOULD BE IN ACCORDANCE WITH THE LATEST ACI BUILDING CODE REQUIREMENTS FOR STRUCTURAL CONCRETE (ACI 318-SECTION 7.7). UNLESS OTHERWISE SPECIFIED.
- 3) FOUNDATION REQUIRES 1500 PSF RATED SOIL.
- 4) TOP OF CONCRETE AT BASEPLATE LOCATIONS TO BE LEVEL AND IN ONE PLANE $\pm 1/8"$.
- 5) DIAGONAL MEASUREMENTS ENDWALL TO ENDWALL MUST BE EQUAL WITHIN $1/2"$.
- 6) BASEPLATE ANCHORS TO BE SUPPLIED BY METTLER TOLEDO. USE BASEPLATES AS TEMPLATES TO LOCATE ANCHORS DURING SCALE INSTALLATION.
- 7) RAMP LENGTH: -PER LOCAL REGULATIONS
-1/2" SLOPE PER FOOT TYPICAL
- 8) CONTRACTOR SUPPLIES:
 - EXCAVATION
 - REINFORCING STEEL
 - CURB ANGLE ASSEMBLIES (SECT C-C)
 - CONCRETE AND FORMS
 - 1 1/2" DIA CONDUIT
 - BUMPER PLATE ASSEMBLIES (VIEWS J-J & N-N)

DRAWING IS TO SCALE ONLY WHEN BORDER MEASURES 22-7/8" X 35" (FULL SIZE)

REV	CHANGE	BY	DATE	SCALE	02
				DATE	10/07/09
				DRN ADF	APPROV
				TITLE	VTC221 FDN, BEAM SLAB, 60' X 11' W/ RISER OPTION
				UNLESS OTHERWISE SPECIFIED, ALL DIMENSIONS ARE IN INCHES, AND DIMENSIONAL TOLERANCES ARE:	THIS PRINT IS FURNISHED WITH THE UNDERSTANDING THAT THE ESSENCE THEREOF WILL NOT BE REPRODUCED IN WHOLE OR IN PART WITHOUT WRITTEN AUTHORIZATION OF METTLER-TOLEDO, INC. ALL DESIGN ARE THE PROPERTY OF METTLER-TOLEDO, INC. AND WILL BE PROTECTED BY PATENTS.
				FRACTIONAL	DECIMAL
				1/32	.XX ± .02
					.XXX ± .005
				ANGULAR	±.5°
					TC207819
					REV

SECTION B-B

SCALE 1/12

SECTION C-C

SCALE 1/12
(TYPICAL END WALL)

SECTION D-D

SCALE 1/12
(TYPICAL FOOTER)
SINGLE BASEPLATE